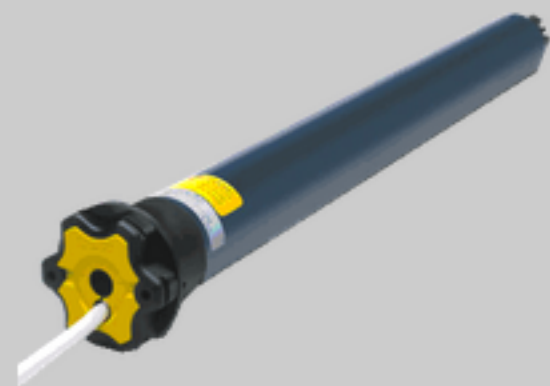


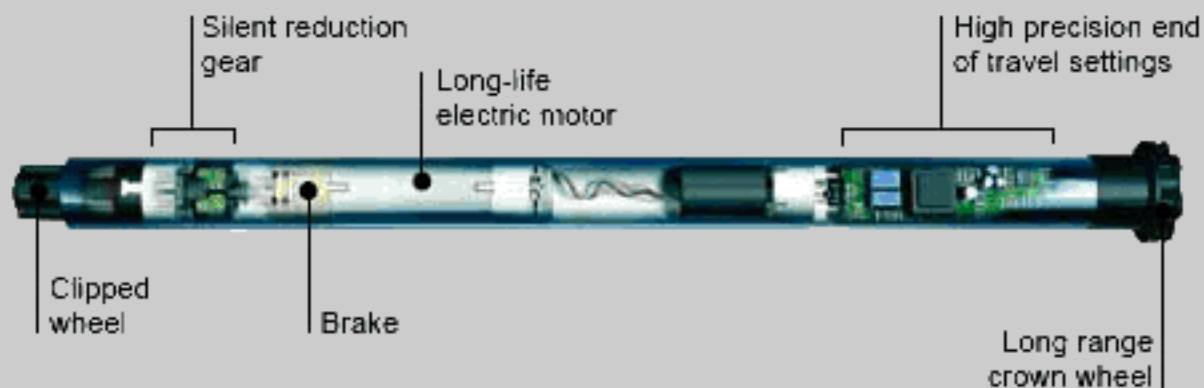
Durasol incorporates state-of-the-art motors and electronics from Somfy®, the industry leader.

Your Durasol dealer will work with you to design a shading solution that allows from one touch wireless control to fully-automated functionality.



Somfy® Motors

- All Somfy® motors are UL and CSA recognized
- 5 year warranty on Somfy® motors and electronics
- Broad range of Somfy® motors to meet your needs
- ISO 9001 certification
- 35 years of experience



Electronics Options



Somfy 1 Channel Remote Control

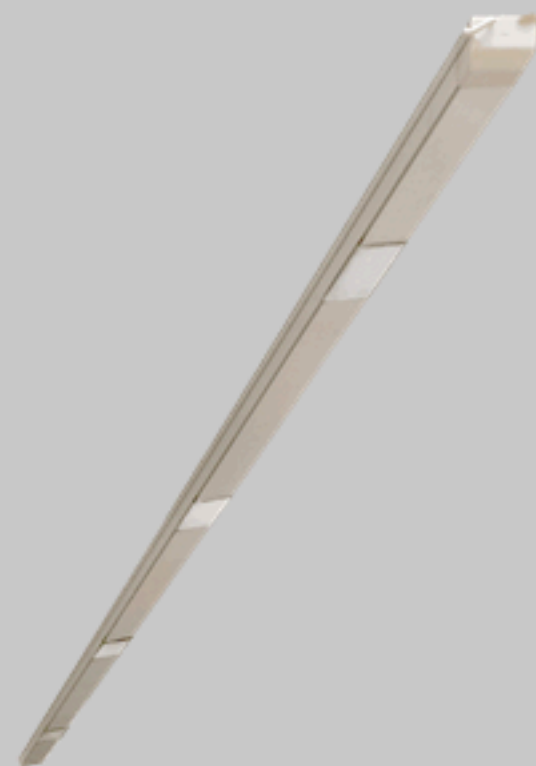


Somfy 5 Channel Remote Control

Accessories



Integrated Low Voltage Lighting



Integrated Speakers

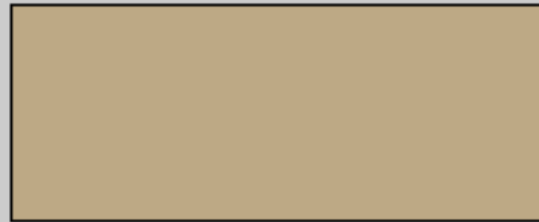
Durasol hardware is available in several architecturally pleasing colors. Our weather-resistant, powder-coated finishes have proven to be the most durable available, and ensure that your investment will blend superbly with your home or business.

Genius Standard Color Finishes

Aluminum Components



White



Sand

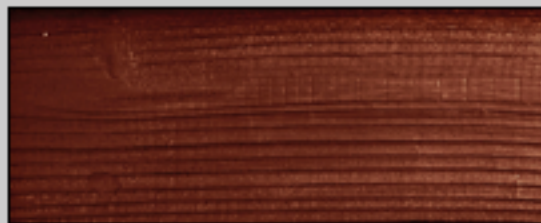


Charcoal

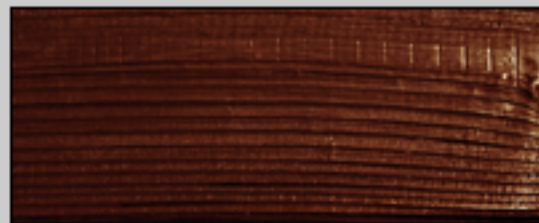
Custom Colors are available

Colors are representative only and may vary from what shows on your screen

Wood Components (L1 Model)



Semi-Gloss Mahogany



Mahogany



Anthracite

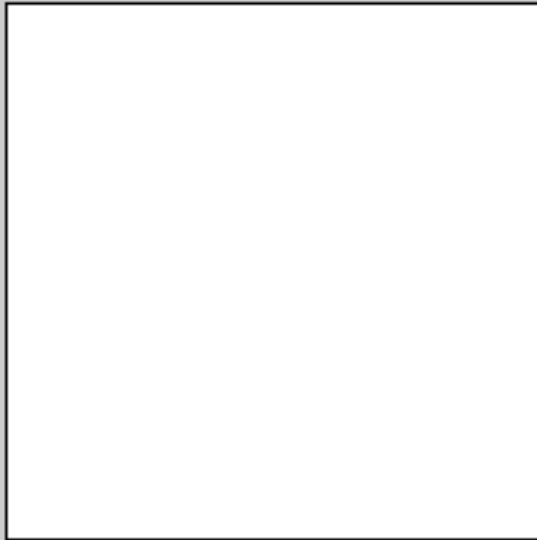


White

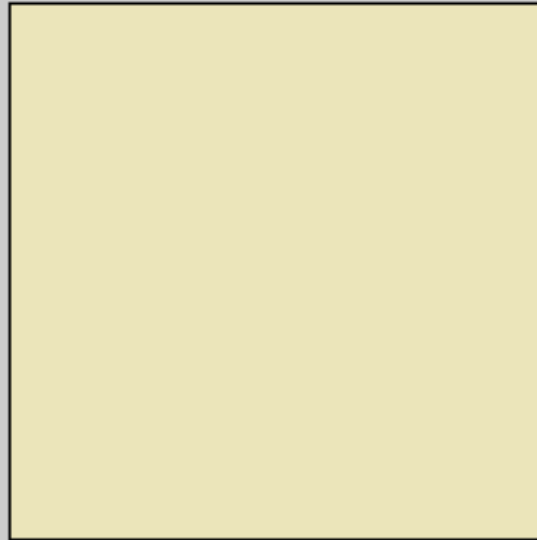
GENNIUS Fabric Options

The coated fabrics have been designed to meet the high quality standards required by the market of tensile structures and large coverings. All coated fabrics are produced with tough polyester as a further guarantee of the high resistance and physical mechanical properties required in textile architecture. The special coating formulation gives the fabric excellent durability, greater protection against mold, and resistance to the action of UV rays and environmental factors that cause aging. The fabric is calendered using special calendering technology. This lacquering, which is high frequency or hot air sealable, protects and further isolates the layer of PVC against atmospheric agents.

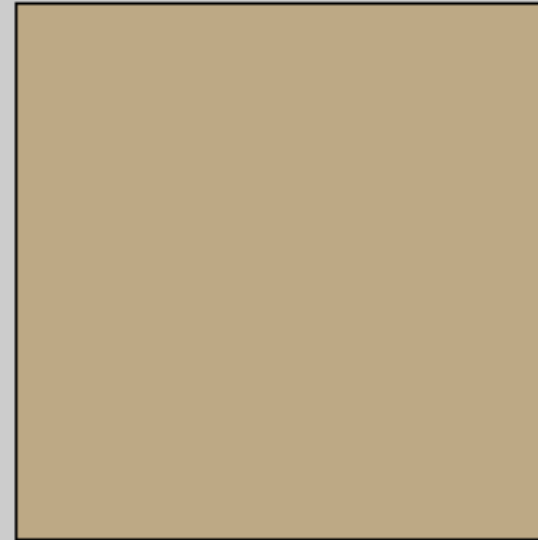
Blackout Fabric *(matte finish, rubic embossed)*



White



Ivory



Sand

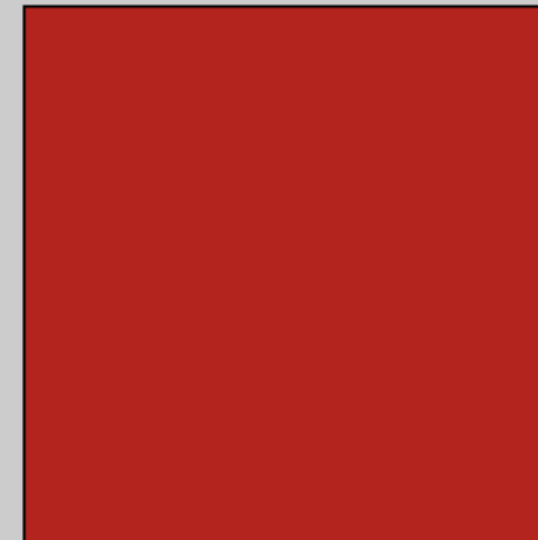
Non-Blackout Fabric



Gray



Forest Green



Brick